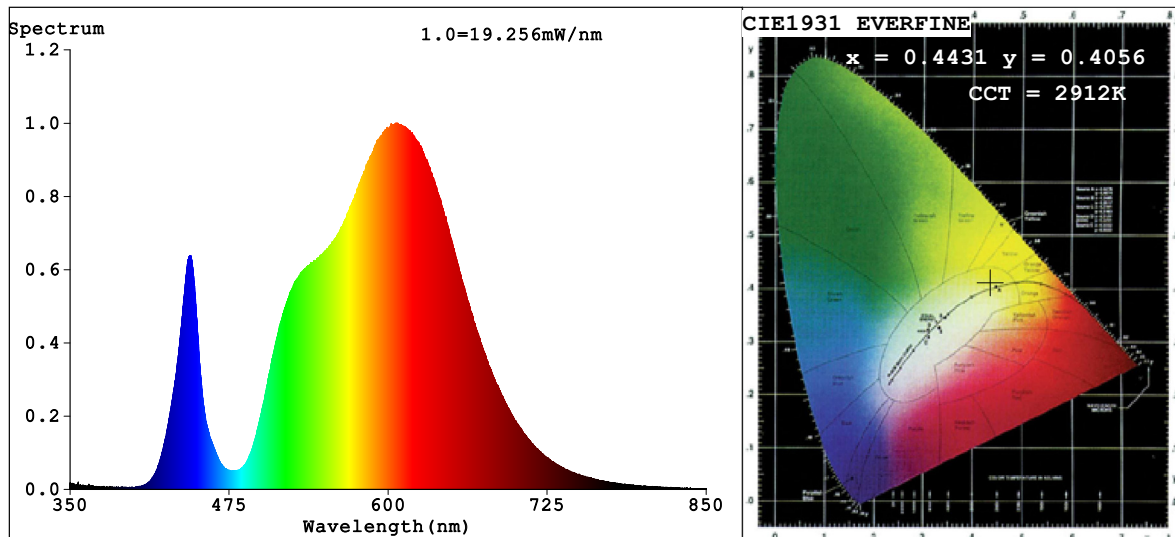


## Spectrum Test Report



### Color Parameters:

Chromaticity Coordinate:  $x=0.4431$   $y=0.4056$   $u'=0.2539$   $v'=0.5229$   
 $CCT=2912K$  ( $Duv=-0.0002$ ) Dominant WL:  $\lambda_d = 583.3nm$  Purity=54.7%  
 Ratio: R=23.4% G=75.3% B=1.3%; Peak WL:  $\lambda_p = 607.2nm$  FWHM=144.8nm  
 Render Index:  $R_a=80.5$  CRI=74.2 TM30:  $R_f=75$   $R_g=101$   
 R1 =81 R2 =85 R3 =88 R4 =82 R5 =79 R6 =80 R7 =85  
 R8 =65 R9 =16 R10=65 R11=82 R12=59 R13=81 R14=93 R15=75

### Photo Parameters:

Flux = 958.8 lm Eff. : 81.21 lm/W  $\Phi_e = 2.977 W$

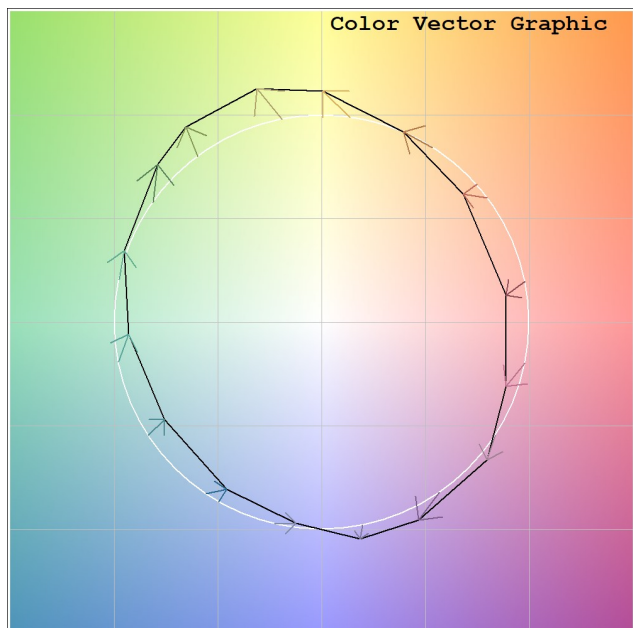
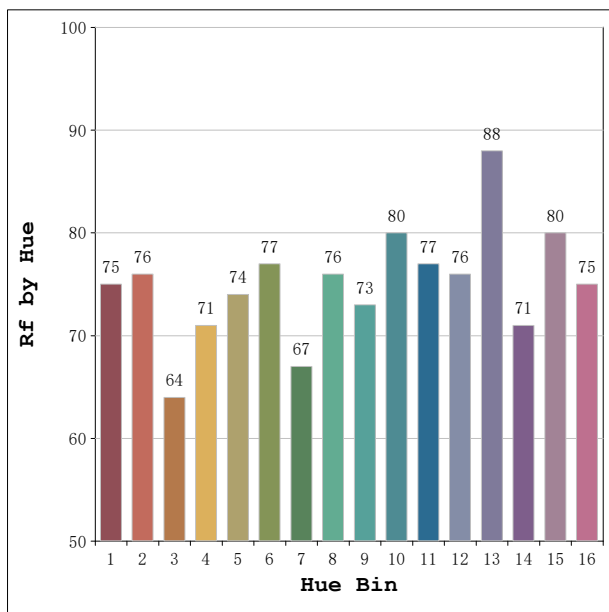
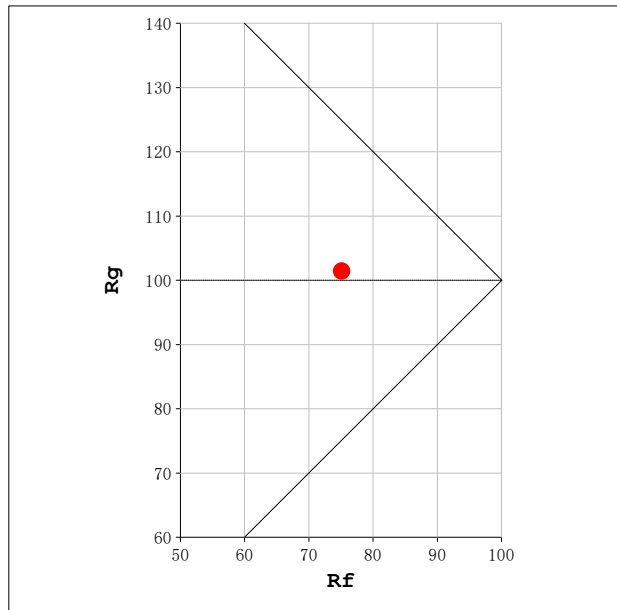
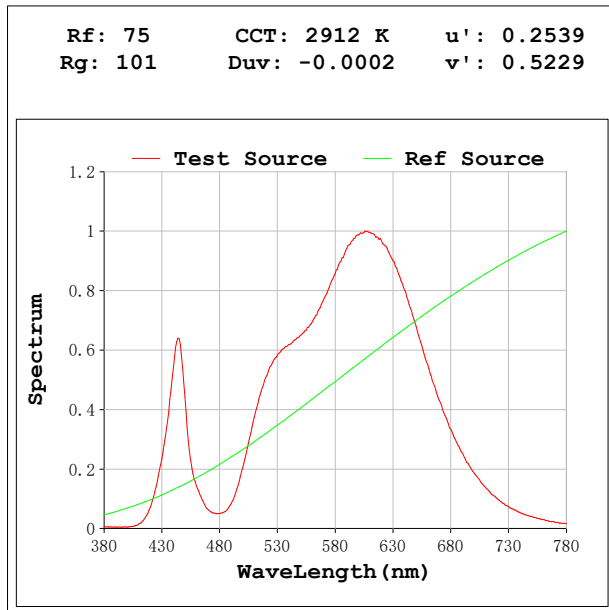
### Electrical parameters:

$V = 230.08 V$   $I = 0.05660 A$   $P = 11.81 W$  PF = 0.9066

Status: Integral T = 1250 ms  $I_p = 44561 (68\%)$

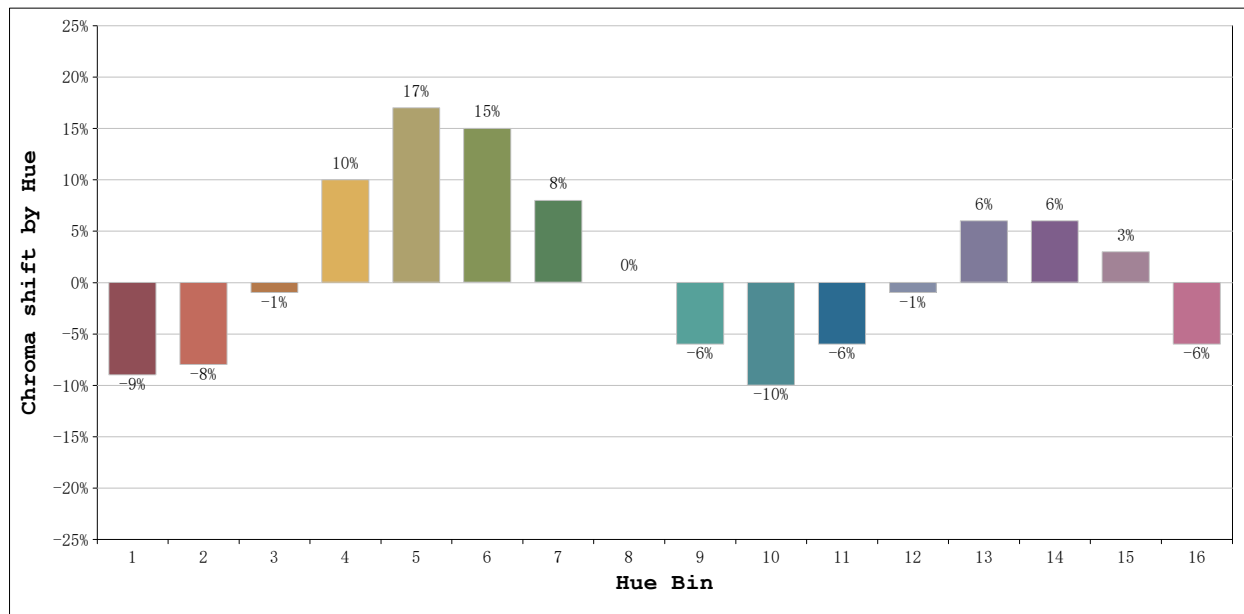
Model: Ecoled Infinity Cob  
 Tester: Sergio Carneros  
 Temperature: 20Deg  
 Manufacturer: Luz Negra

Number: 34.266 Roll to Roll  
 Date: 2026-03-25 09:59:25  
 Humidity: 50%  
 Remarks: 100cm de tira flexible



Model:Ecoled Infinity Cob  
 Tester:Sergio Carneros  
 Temperature:20Deg  
 Manufacturer:Luz Negra

Number: 34.266 Roll to Roll  
 Date:2026-03-25 09:59:25  
 Humidity:50%  
 Remarks:100cm de tira flexible



			Graphic shift(%)	
Hue Bin	Hue Angle	Rf	Chroma	Hue
1	0.0° - 22.5°	75	-9	-4
2	22.5° - 45.0°	76	-8	8
3	45.0° - 67.5°	64	-1	16
4	67.5° - 90.0°	71	10	15
5	90.0° - 112.5°	74	17	9
6	112.5° - 135.0°	77	15	-2
7	135.0° - 157.5°	67	8	-15
8	157.5° - 180.0°	76	0	-13
9	180.0° - 202.5°	73	-6	-11
10	202.5° - 225.0°	80	-10	-1
11	225.0° - 247.5°	77	-6	7
12	247.5° - 270.0°	76	-1	10
13	270.0° - 292.5°	88	6	-1
14	292.5° - 315.0°	71	6	-15
15	315.0° - 337.5°	80	3	-11
16	337.5° - 360.0°	75	-6	-12

Model:Ecoled Infinity Cob  
Tester:Sergio Carneros  
Temperature:20Deg  
Manufacturer:Luz Negra

Number: 34.266 Roll to Roll  
Date:2026-03-25 09:59:25  
Humidity:50%  
Remarks:100cm de tira flexible